

HA-TINH
ANNAM

Ha-Tinh's E2(ch) postmark was in service for just a few years. The latest reported use is from the end of World War I, 1919.



POSTMARK TYPE: E2(ch)
PERIOD OF USE: 1916-19



POSTAL MARKINGS
HA-TINH ANNAM 25-6 19
REVERSE
HANOI TONKIN 26-6 19
HAIPHONG TONKIN 27-6 19

HA-TINH
ANNAM

Ha-Tinh's type E1 postmark was used simultaneously with the type E2 postmarks although the E1 device remained in service longer. The Ha-Tinh post office employed the type E1 postmark for a decade. The latest reported use is from 1927.



POSTMARK TYPE: E1
PERIOD OF USE: 1917-27



POSTAL MARKINGS
HA-TINH ANNAM 3 FEVR 27 (blue)
framed R (blue) with manuscript registration number
REVERSE
HA NOI TONKIN 6-2 27

HA-TINH
ANNAM

To help promote airmail services, major post offices like the one at Ha-Tinh distributed a variety of airmail labels to their customers.



POSTMARK TYPE: G
PERIOD OF USE: 1925-43



POSTAL MARKINGS

HA-TINH ANNAM 1-8 34
airmail label

REVERSE

TOURANE ANNAM 2-8 34
MARSEILLE-GARE BCHES DU RHONE 12 • VIII 1934

HOI-XUAN ANNAM

Located in Thanh-Hoa Province, the town of Hoi-Xuan had a secondary post office. The type G postmark was the last reported cancellation from Hoi-Xuan.



POSTMARK TYPE: G
PERIOD OF USE: 1928-37



POSTAL MARKINGS

HOI-XUAN ANNAM 17-12 33

REVERSE

THANH-HOA ANNAM 18-12 33

SAIGON-CENTRAL COCHINCHINE 21-12 33

LAC-OU-VILLERS DOUBS 2-1 34

HONECOHE ANNAM

The only postmark that ever employed the "Honecohe" spelling was a type G device. It remained in service for a decade and a half.



POSTMARK TYPE: G
PERIOD OF USE: 1929-44



POSTAL MARKINGS
HONECOHE ANNAM 26-2 31
REVERSE
NHATRANG ANNAM 26-2 31
SAIGON-CENTRAL COCHINCHINE 27-2 31

HUE ANNAM

Hue's first postmark was a type A device with "ANNAM" at the top and "HUE" at the base. The type a postmark was in service for almost two decades.



POSTMARK TYPE: A
PERIOD OF USE: 1876-94



POSTAL MARKINGS

ANNAM HUE 27 SEPT. 90
HUE COCHINCHINE CORPS EXPE
CORPS EXPED DU TONKIN L.N. N° 5 29 SEPT 90

HUE
ANNAM

Hue's type D1 postmark remained in service for a quarter of a century. This example from 1911 is the latest known use of the postmark.



POSTMARK TYPE: D1
PERIOD OF USE: 1886-1911



POSTAL MARKINGS
HUE ANNAM 13 JUN 11
BRUSSEL – BRUXELLES – 23 • VII 1911

HUE
ANNAM

The type E2 postmark was used at Hue for nearly three decades.



POSTMARK TYPE: E2
PERIOD OF USE: 1892-1921



POSTAL MARKINGS
HUE ANNAM 3 DEC 10
REVERSE
NIMES GARD 3-1 11
UZES GARD 3-1 11

HUE
ANNAM

Hue's type E1 postmark was phased in as the long-lived type E2 postmark was phased out of service. Nonetheless, it was in use for only three years.



POSTMARK TYPE: E1
PERIOD OF USE: 1919-21



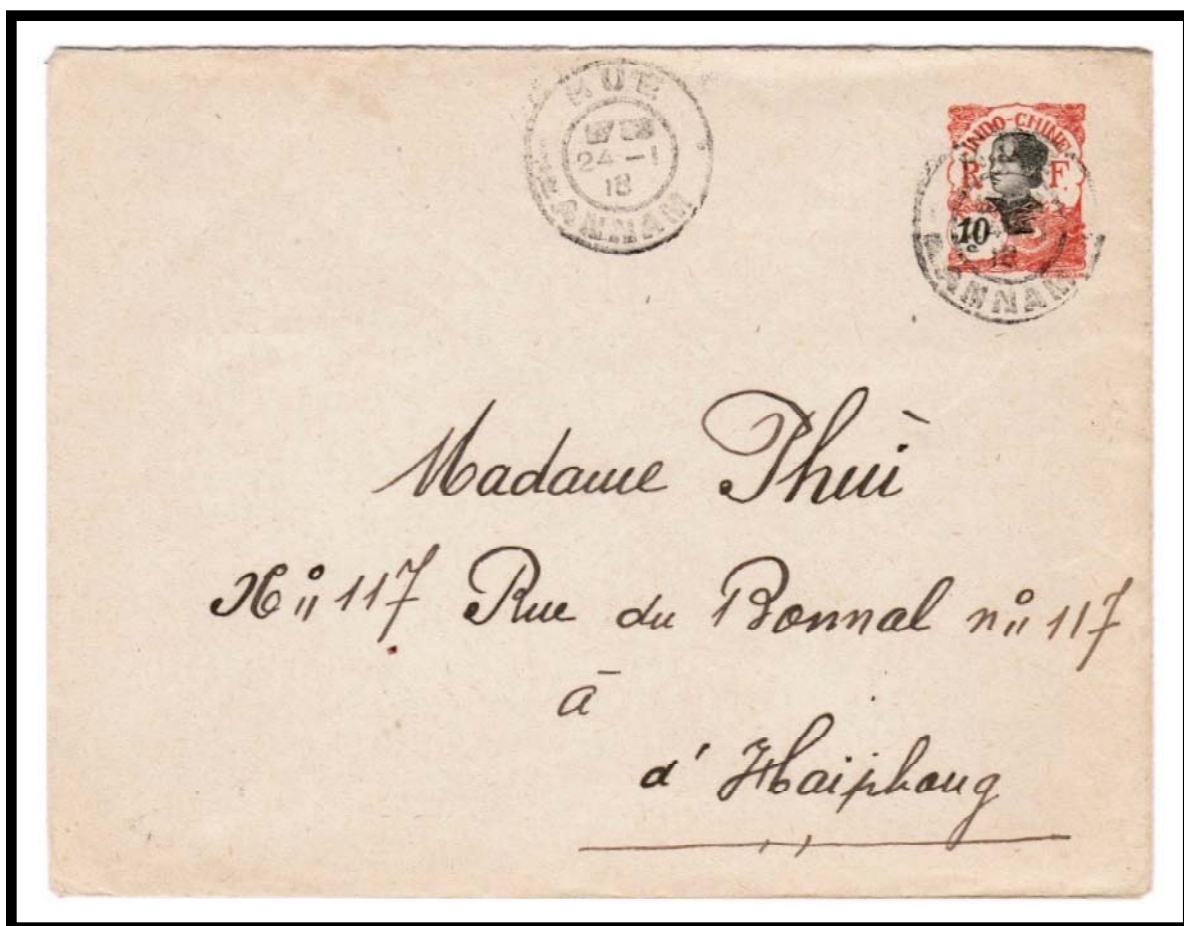
POSTAL MARKINGS
HUE ANNAM 2 AVRIL 19

HUE
ANNAM

The type E1(ch) postmark is characterized by a solid, vice dashed, inner circle and a month designated by numerals, vice letters.



POSTMARK TYPE: E1(ch)
PERIOD OF USE: 1913-19



POSTAL MARKINGS
HUE ANNAM 24-1 18
REVERSE
HANOI TONKIN 27-1 18

HUE ANNAM

Because the name "HUE" is so small, normal lettering results in the postmark having much blank space.



HUE POSTMARK TYPE: G
PERIOD OF USE: 1922-47



POSTAL MARKINGS

HUE ANNAM 8-9 31

REVERSE

SAIGON-CENTRAL COCHINCHINE 10-9 31

MARSEILLE-GARE B~~CHES~~ DU RHONE 21 • IX 1931

HUE
ANNAM

Larger lettering was used for "HUE" to more effectively exploit the available space.



HUE POSTMARK TYPE: G
PERIOD OF USE: 1922-47



POSTAL MARKINGS

HUE ANNAM 7-6 32

airmail label

framed Saigon-Marseille

REVERSE

SAIGON-CENTRAL COCHINCHINE 9-6 32

MARSEILLE-GARE BCHES DU RHONE 19 • 6 1932

HUE
ANNAM

By World War II, very large lettering was employed for the same type G postmark.



POSTMARK TYPE: G
PERIOD OF USE: 1922-47



POSTAL MARKINGS
HUE ANNAM 29-3 42

HUE
ANNAM

With this version of Hue's type G1 postmark, the lettering is vertically compressed as shown on this envelope posted on Christmas Day 1948.



POSTMARK TYPE: G1
PERIOD OF USE: 1947-49



POSTAL MARKINGS
HUE ANNAM 25-12 48

HUE
CENTRE VIET-NAM

As the former imperial capital, Hue transitioned from capital of "ANNAM" to the capital of "CENTRE VIET-NAM."



POSTMARK TYPE: V1(t)
PERIOD OF USE: 1949-51



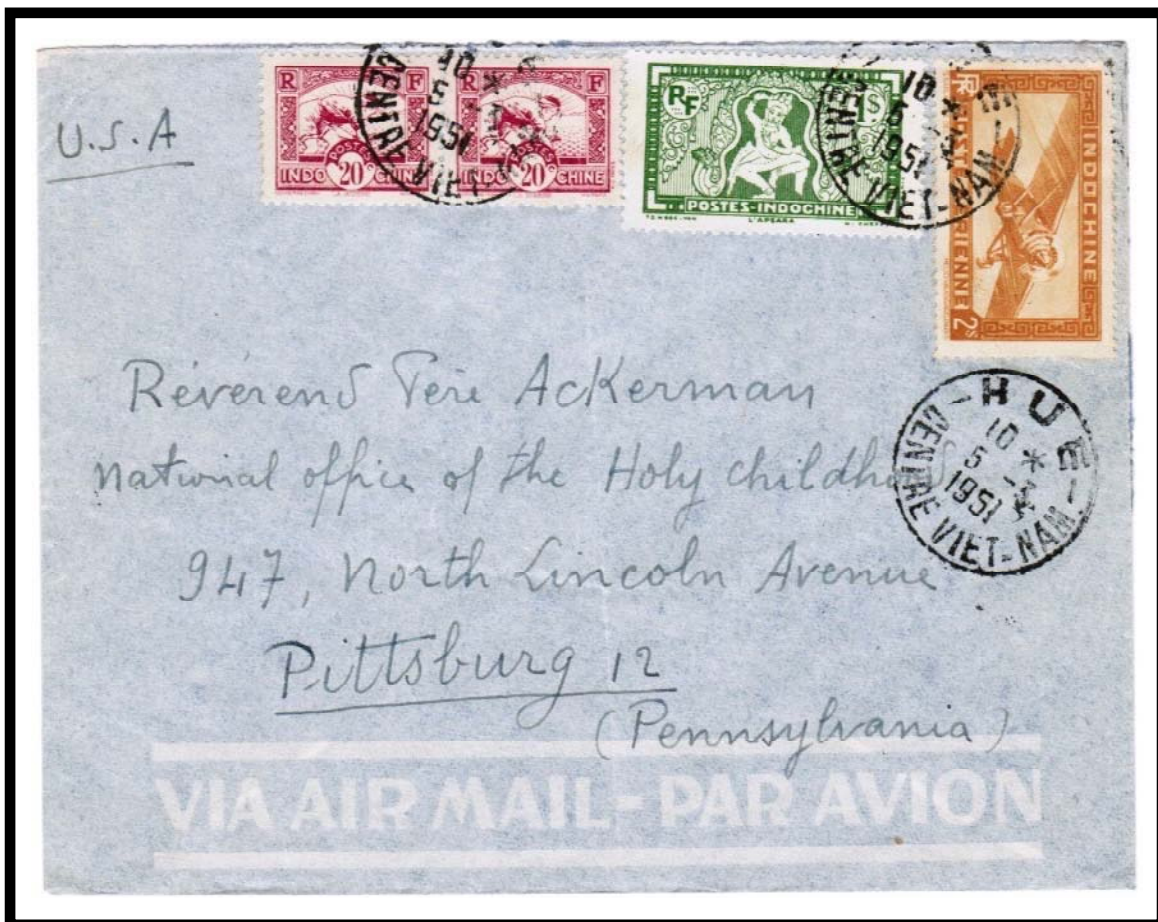
POSTAL MARKINGS
HUE CENTRE VIET-NAM 5-4 1950
REVERSE
DALAT PLATEAUX-INDOCHINOIS 7-4 1950

HUE
CENTRE VIET-NAM

With this version of the type V1(t) postmark, the lettering for "HUE" is larger and bolder. The final year of service for this postmark was 1951



POSTMARK TYPE: V1(t)
PERIOD OF USE: 1949-51



POSTAL MARKINGS
HUE CENTRE VIET-NAM 5-3 1951

HUE A
ANNAM

Hue A was an auxilliary post office whose first postmark employed the type G format. Occasionally, postmarks were struck with blue ink instead of with the standard black ink.



POSTMARK TYPE: G
PERIOD OF USE: 1929-43



POSTAL MARKINGS
HUE A ANNAM 2-1 30
registration label
registration number handstamps

REVERSE

SAIGON-CENTRAL COCHINCHINE 6-2 30
CHICAGO, ILL. REG. DIV. FEB 10 1930

HUE A ANNAM

Hue A was an auxiliary post office whose first postmark employed the type G format. Postmarks from this post office were commonly struck with blue ink instead of the standard black ink used by most post offices.



POSTMARK TYPE: G
PERIOD OF USE: 1929-43



POSTAL MARKINGS
HUE A ANNAM 20-2 30

HUE A CENTRE VIET-NAM

The final postmark used by the Hue A auxiliary post office was a type V1 device.
The type V1 postmark was in service for only four years.



POSTMARK TYPE: V1
PERIOD OF USE: 1949-52



POSTAL MARKINGS
HUE A CENTRE VIET-NAM 24-3 1951

HUE-MANGEA ANNAM

Hue-Mangea was a telegraph station that accepted letters for processing into the postal system from 1894 through 1904. This example from 1904 is the latest known Hue-Mangea postmark for processed mail.



POSTMARK TYPE: E2
PERIOD OF USE: 1896-1904



POSTAL MARKINGS
HUE-MANGEA ANNAM 3 MARS 04

HUE-MANGEA ANNAM

Hue-Mangea was a telegraph station that accepted letters from 1894 through 1904. Clerks there applied the postmark as a favor cancel from 1911 until 1914.



POSTMARK TYPE: E2
PERIOD OF USE: 1911-14

POSTAL MARKINGS
HUE-MANGEA ANNAM 8 FEVR 12

KONTUM
ANNAM

Kontum's first postmark deviated from the norm in that the inner circle was composed of 18 dashes as opposed to the normal 12 dashes. The earliest known use of this postmark is this example from 1917.



POSTMARK TYPE: E3(18t)
PERIOD OF USE: 1917-25



POSTAL MARKINGS
KONTUM ANNAM 20 JANV 17
REVERSE
VINH ANNAM 26-1 17

KONTUM ANNAM

Kontum's type G1 postmark was in service for only two years, 1947-48. Soon after this time, "CENTRE VIET-NAM" replaced "ANNAM" at the base of postmarks.



POSTMARK TYPE: G1
PERIOD OF USE: 1947-48



POSTAL MARKINGS
KONTUM ANNAM 19-4 48
REVERSE
SAIGON R.P. COCHINCHINE 3-5 48

KONTUM PLATEAUX INDOCHINOIS

Kontum introduced its type V2 postmark in 1948. It remained in service for three years.



POSTMARK TYPE: V2(t)
PERIOD OF USE: 1948-51



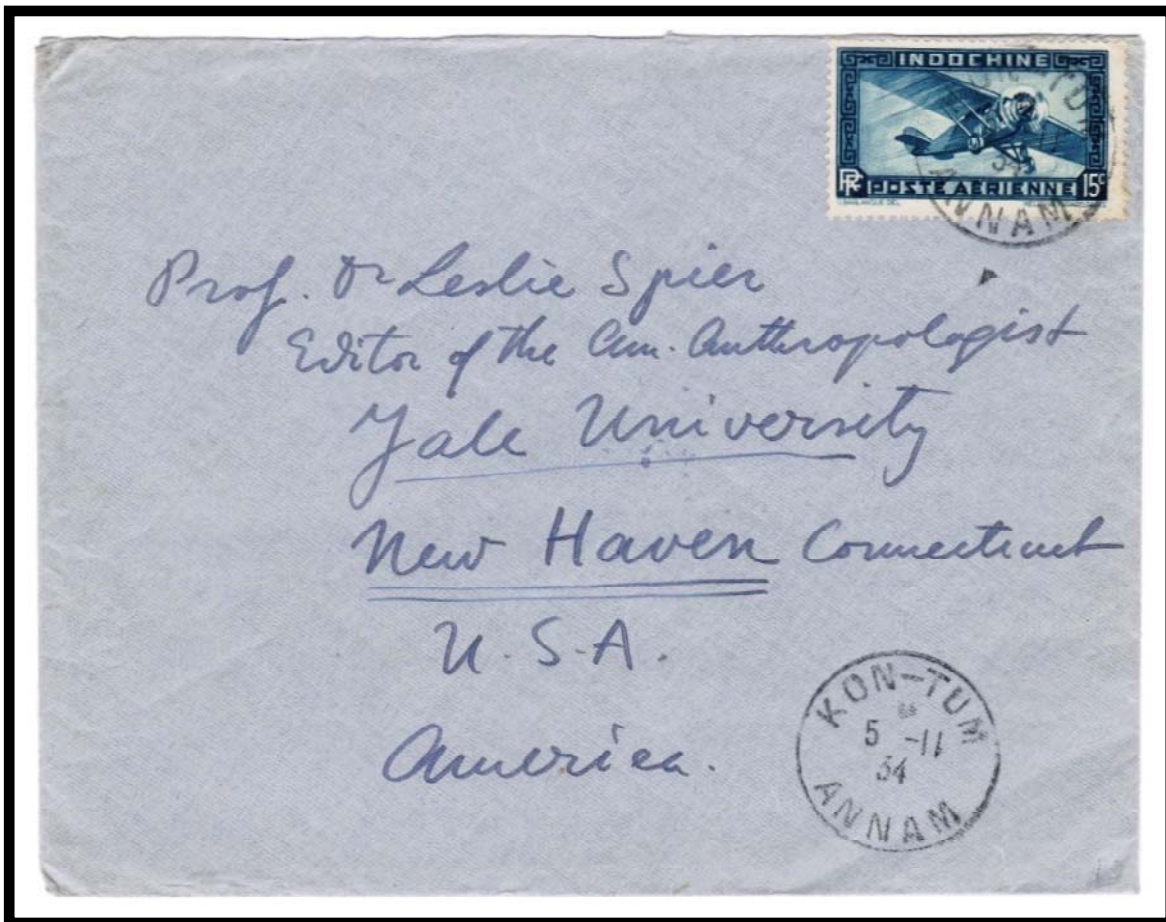
POSTAL MARKINGS
KONTUM PLATEAUX INDOCHINOIS 22-11 48

KON-TUM
ANNAM

The only postmark that used the hyphenated spelling, "KON-TUM," was a type G format from 1928 to 1943.



POSTMARK TYPE: G
PERIOD OF USE: 1928-43



POSTAL MARKINGS
KON-TUM ANNAM 5-11 34
REVERSE
QUI-NHON ANNAM 7-11 34

KY-ANH
ANNAM

Ky-Anh's post office was transferred there from Roon in 1922. The only style postmark that the post office used was the type G format.



POSTMARK TYPE: G
PERIOD OF USE: 1923-42



POSTAL MARKINGS
KY-ANH ANNAM 25-1 24
REVERSE
VINH ANNAM 25-1 34
HANOI TONKIN 26-1 24

LAGI
ANNAM

Around 1920, the administrative authority over Lagi transferred from Cochinchina to Annam. The only style postmark that its post office used was the type G format.



POSTMARK TYPE: G
PERIOD OF USE: 1923-43



POSTAL MARKINGS
LAGI ANNAM 14-11 23
REVERSE
PHANTHET ANNAM 18-11 23

LAO-BAO ANNAM

Lao-Bao's first postmark that used the hyphenated spelling was in the type D1 format. The postmark remained in service for five years.



POSTMARK TYPE: D1
PERIOD OF USE: 1903-07



POSTAL MARKINGS

LAO-BAO ANNAM 11 MAI 05
QUANGTRI ANNAM 16 MAI 05
HUE ANNAM 18 MAI 05
TOURANE ANNAM 19 MAI 05

LAO-BAO ANNAM

The Lao-Bao post office opened in 1903. Its first postmark was a type D1 device. This example is the latest known use from 1910.



POSTMARK TYPE: D1
PERIOD OF USE: 1903-10



POSTAL MARKINGS
LAO-BAO ANNAM 8 JANV 10
REVERSE
QUANG-TRI ANNAM 11 JANV 10

LAO-BAO ANNAM

The last postmark for Lao-Bao was a type G device. Here a 1- cent stamp was added to a 36-cent airmail envelope because the letter rate to France had risen from 6 cents to 7 cents in December 1937. The airmail surcharge remained at 30 cents.



POSTMARK TYPE: G
PERIOD OF USE: 1931-45



POSTAL MARKINGS

LAO-BAO ANNAM 17-8 38

REVERSE

QUANG-TRI ANNAM 18-8 38

HANOI R.P. TONKIN 19-8 38

StGERMAIN EN LAYE SEINE ET OISE 26 . VIII . 38

LETHUY ANNAM

The Lethuy post office was open for a quarter of a century from 1903 through 1928. Its first postmark, a type F1 format, was the only postmark that utilized the non-hyphenated spelling "LETHUY."



POSTMARK TYPE: F1
PERIOD OF USE: 1903-22



POSTAL MARKINGS

LETHUY ANNAM 19 JANV 04
QUANG-TRI ANNAM 21 JANV 04
SAIGON-CENTRAL COCHINCHINE 23 JANV 04
LA CLAYETTE SAONE ET LOIRE 24 FEVR 04

LINH-CAM ANNAM

Transferred from Ky-Anh in 1928, the Linh-Cam post office functioned until after World War II in 1946.



POSTMARK TYPE: G
PERIOD OF USE: 1928-42



POSTAL MARKINGS

LINH-CAM ANNAM 30-1 33

REVERSE

VINH ANNAM 30-1 33

SAIGON-CENTRAL COCHINCHINE 2-2 33

MARSEILLE-GARE-AVION BOCHES DU RHONE 13 • II 1933

MUONG-SEN ANNAM

Around 1926, the Lao post office of Thado transferred to Muong-Sen, Annam. The post office employed the type G postmark for a decade and a half.



POSTMARK TYPE: G
PERIOD OF USE: 1928-42



POSTAL MARKINGS

MUONG-SEN ANNAM 1-2 39

REVERSE

VINH ANNAM 2-2 39

DAM PIERRE LES BOIS DOUBS 11-2 39

NICE R.P. ALPES MMEs 12 • II 1939

NHATRANG A CENTRE VIET-NAM

The auxiliary NHATRANG A post office employed the seldom-used type VH2 postmark in 1951.



POSTMARK TYPE: VH2
PERIOD OF USE: 1951



POSTAL MARKINGS

NHATRANG A CENTRE VIET-NAM 2-10 1951
COLMAR HAUT-RHIN 12-10 1951

REVERSE

NHATRANG A CENTRE VIET-NAM 2-10 1951
NHATRANG CENTRE VIET-NAM 3-10 1951

NHATRANG CTADELLE ANNAM

Opened on 1 January 1920, Nhatrang Citadel remained in operation until the end of World War II in 1945. Its first postmark was an unusual type F1 design. The postmark was in service for about five years. Here it was struck with blue ink.



POSTMARK TYPE: F1
PERIOD OF USE: 1921-26



POSTAL MARKINGS

NHATRANG CTADELLE ANNAM 13 JANV 26
plain R with manuscript registration number

REVERSE

NHATRANG ANNAM 13-1 26

NHATRANG CITADELLE ANNAM

The latest known use of Nhatrang Citadelle's type F1 postmark is this example, struck with blue ink, in 1927.



POSTMARK TYPE: F1
PERIOD OF USE: 1921-27



POSTAL MARKINGS
HANOI CITADELLE ANNAM 15 JANV 27 (blue)

NHATRANG CITADELLE
ANNAM

The second and final postmark used by the Nhatrang Citadelle post office was a conventional type G1 format.



POSTMARK TYPE: G1
PERIOD OF USE: 1927-44



POSTAL MARKINGS
NHATRANG CITADELLE ANNAM 22-7 37
REVERSE
NHATRANG ANNAM 22-7 37

NINH-CHU
ANNAM

The Ninh-Chu post office operated from 1902 until 1945. Only a single postmark with the hyphenated "NIN-CHU" spelling is known – a type F1 device.



POSTMARK TYPE: F1
PERIOD OF USE: 1904-29



POSTAL MARKINGS

NINH-CHU ANNAM 18 AVRIL 17

REVERSE

PHANRANG ANNAM 19-4 17

SAIGON-CENTRAL COCHINCHINE 20-4 17

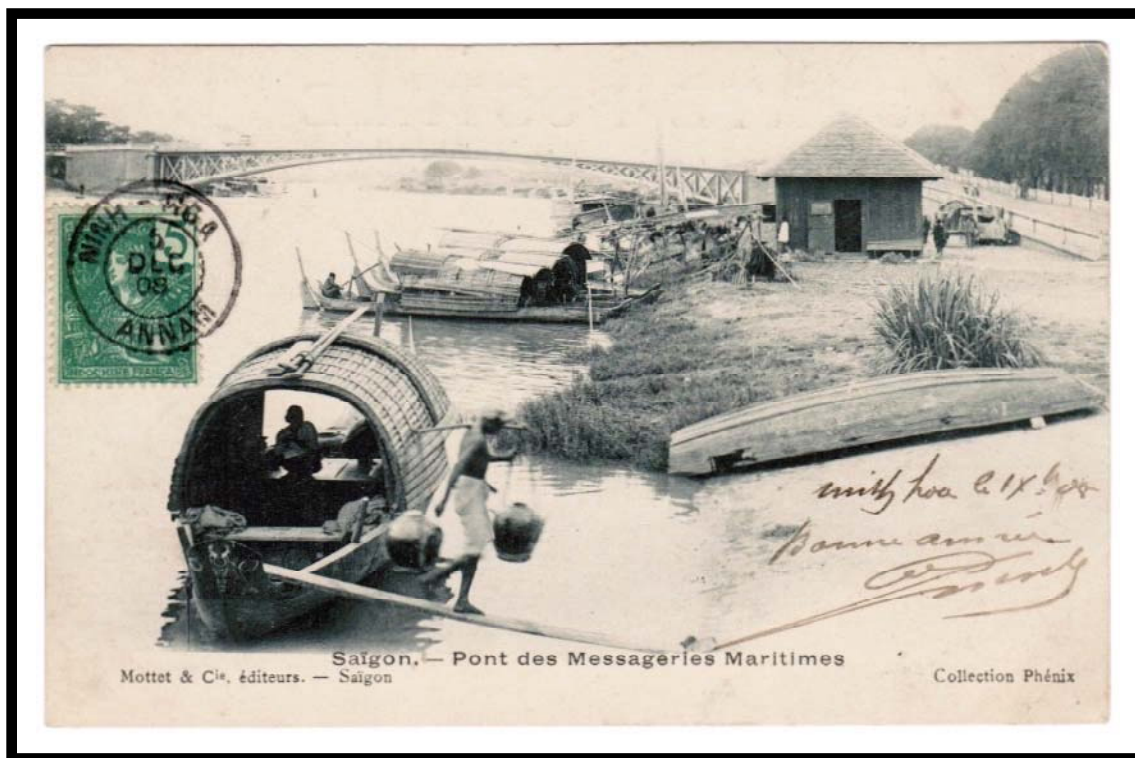
HANOI TONKIN 2-5 17

NINH-HOA ANNAM

The Ninh-Hoa post office began operations in 1894 and its first postmark was a type D1 device. While the original D1 format employed the hyphenated "NINH-HOA" spelling, some later postmark formats did not.



POSTMARK TYPE: D1
PERIOD OF USE: 1904-11



POSTAL MARKINGS
NINH-HOA TONKIN 5 DEC 08

NINH HOA
ANNAM

The first postmark with the non-hyphenated "NINH HOA" spelling was in the type E2(ch) device.



POSTMARK TYPE: E2(ch)
PERIOD OF USE: 1913-29



POSTAL MARKINGS

NINH HOA ANNAM 29-11 23

REVERSE

QUINHONE ANNAM 30-11 23

HANOI TONKIN 4-12 23

NINH HOA
ANNAM

Ninhhoa kept its type G postmark in service for two decades. This was the last postmark with the non-hyphenated spelling until after Vietnam's independence.



POSTMARK TYPE: G
PERIOD OF USE: 1923-44



POSTAL MARKINGS
NINH HOA ANNAM 13-1 29
REVERSE
SAIGON-CENTRAL COCHINCHINE 14-1 29

NINH-HOA
ANNAM

Three postmarks appeared with the hyphenated spelling "NINH-HOA." The type G format was the last that employed this spelling variation.



POSTMARK TYPE: G
PERIOD OF USE: 1932-49



POSTAL MARKINGS
NINH-HOA ANNAM 8-2 47
REVERSE
NINH-HOA ANNAM 8-2 47
SAIGON-PRINCIPAL COCHINCHINE 10-2 47

NINH HOA
CENTRE VIET-NAM

Previously unknown, this is the “discovery example” of Ninhhoa’s type V1(t) postmark.



POSTMARK TYPE: V1(t)
PERIOD OF USE: 1950



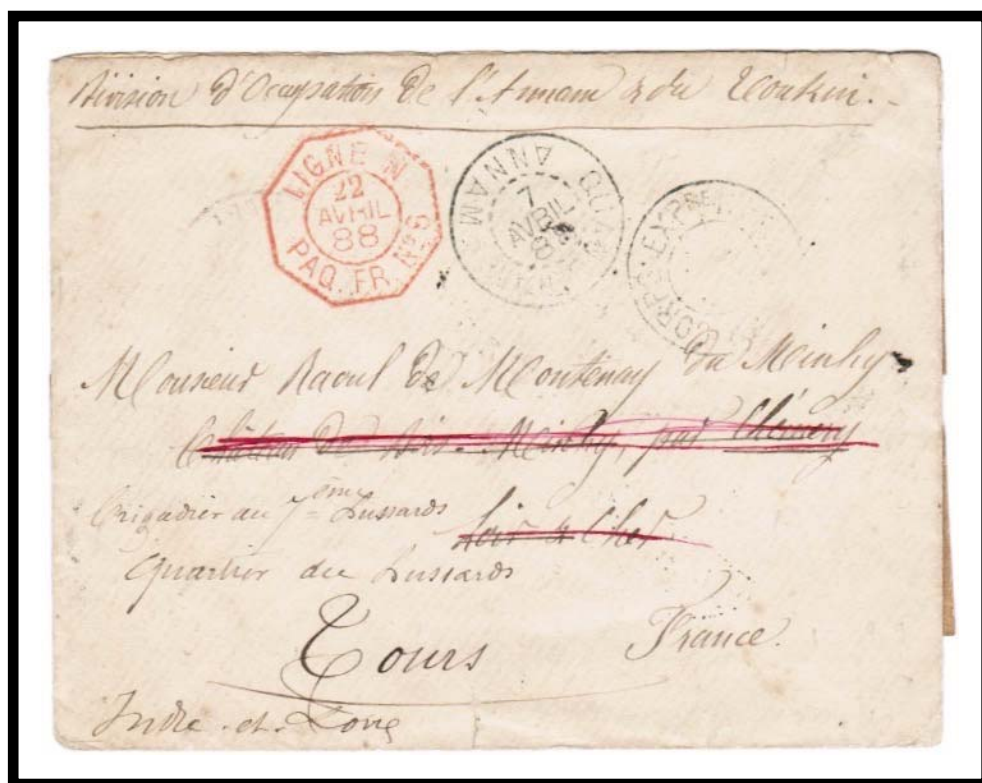
POSTAL MARKINGS
NINH HOA CENTRE VIET-NAM 12-7 1950
REVERSE
NINH HOA CENTRE VIET-NAM 12-7 1950

QUANG-NAM ANNAM

Quang-Nam's only known postmark is a type D2 device. It has only been reported used from the year 1888.



POSTMARK TYPE: D2
PERIOD OF USE: 1888



POSTAL MARKINGS

QUANG-NAM ANNAM 7 AVRIL 88
LIGNE PAQ. FR. NO 6 22 AVRIL 88
military cachet

REVERSE

SAIGON CAL COCHINCHINE 16 AVRIL 88
PARIS A AGEN C 18 MAI 88

QUANG-NGAI ANNAM

Opened in March 1887, Quang-Ngai's first postmark was a type D2 device, which remained in service for over three decades.



POSTMARK TYPE: D2
PERIOD OF USE: 1889-1922



POSTAL MARKINGS
QUANG-NGAI ANNAM 25 MARS 19
REVERSE
TOURANE ANNAM 26-3 19

QUANG-NGAI
ANNAM

Normally, the year was indicated with two digits, but in recognition of the turn of the century, four digits were used in 1900. It is likely that the post office reverted to two digits the following year.



POSTMARK TYPE: D2
PERIOD OF USE: 1889-1922



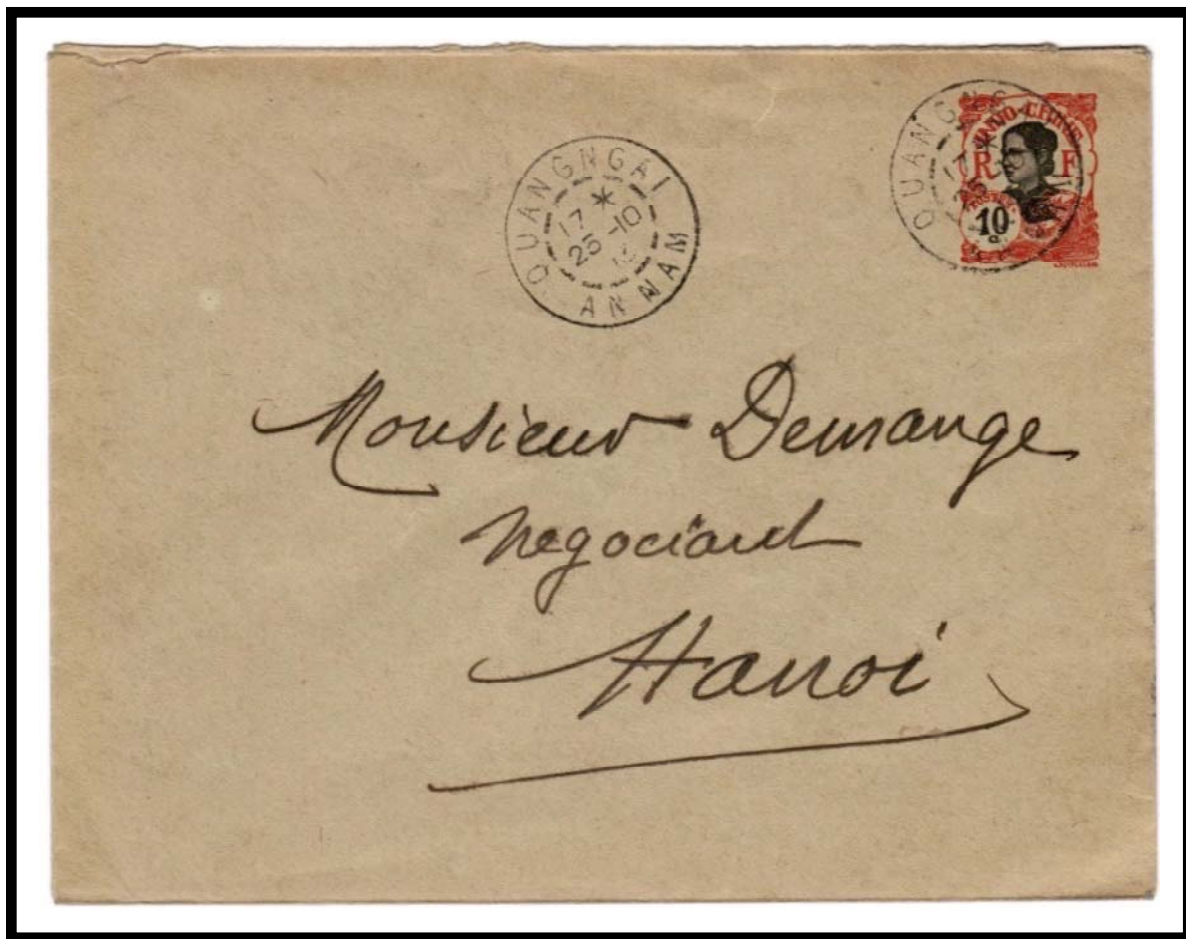
POSTAL MARKINGS
QUANG-NGAI ANNAM 22 NOV 1900

QUANGNGAI ANNAM

The first postmark that used the non-hyphenated "QUANGNGAI" spelling was a type E2(ch) device. The earliest reported use of Quangngai's type E2(ch) postmark is 1913.



POSTMARK TYPE: E2(ch)
PERIOD OF USE: 1913-25



POSTAL MARKINGS
QUANGNGAI ANNAM 25-10 13
REVERSE
TOURANE ANNAM 27-10 13

QUANG-NGAI
ANNAM

The hyphenated version, "QUANG-NGAI," disappeared in 1939 at the beginning of World War II.



POSTMARK TYPE: G
PERIOD OF USE: 1924-39



POSTAL MARKINGS

QUANG-NGAI ANNAM 6-10 32
framed Saigon-Marseille route marking

REVERSE

PARIS VIII DISTRIBUTION 17 • X 1932

QUANGNGAI ANNAM

Cinnamon trees were extensively cultivated in the hilly regions around Quangngai. The postmark spelling without a hyphen lasted into World War II. The post office closed in 1946 but reopened after independence.



POSTMARK TYPE: G1
PERIOD OF USE: 1939-43



POSTAL MARKINGS
QUANGNGAI ANNAM 3-12 39

QUANG-TRI
ANNAM

The Quang-Tri post office opened in 1886. One of Quang-Tri's earliest postmarks was a type D2 device. Its final year of service was 1911.



POSTMARK TYPE: D2
PERIOD OF USE: 1894-1911



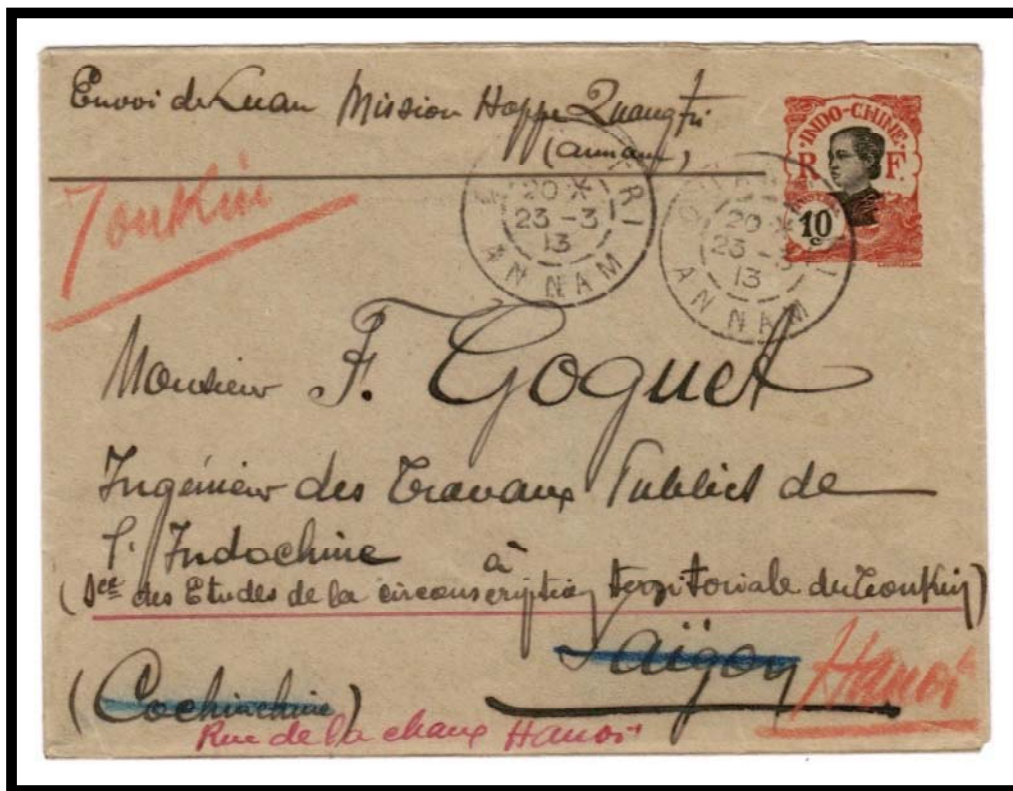
POSTAL MARKINGS
QUANG-TRI ANNAM 3 AVRIL 11
REVERSE
HA NOI TONKIN 7 AVRIL 11

QUANG-TRI
ANNAM

With the E2(ch) postmark the month of mailing is denoted with numerals instead an abbreviation. The first year for the E2(ch) postmark was 1913.



POSTMARK TYPE: E2(ch)
PERIOD OF USE: 1913-22



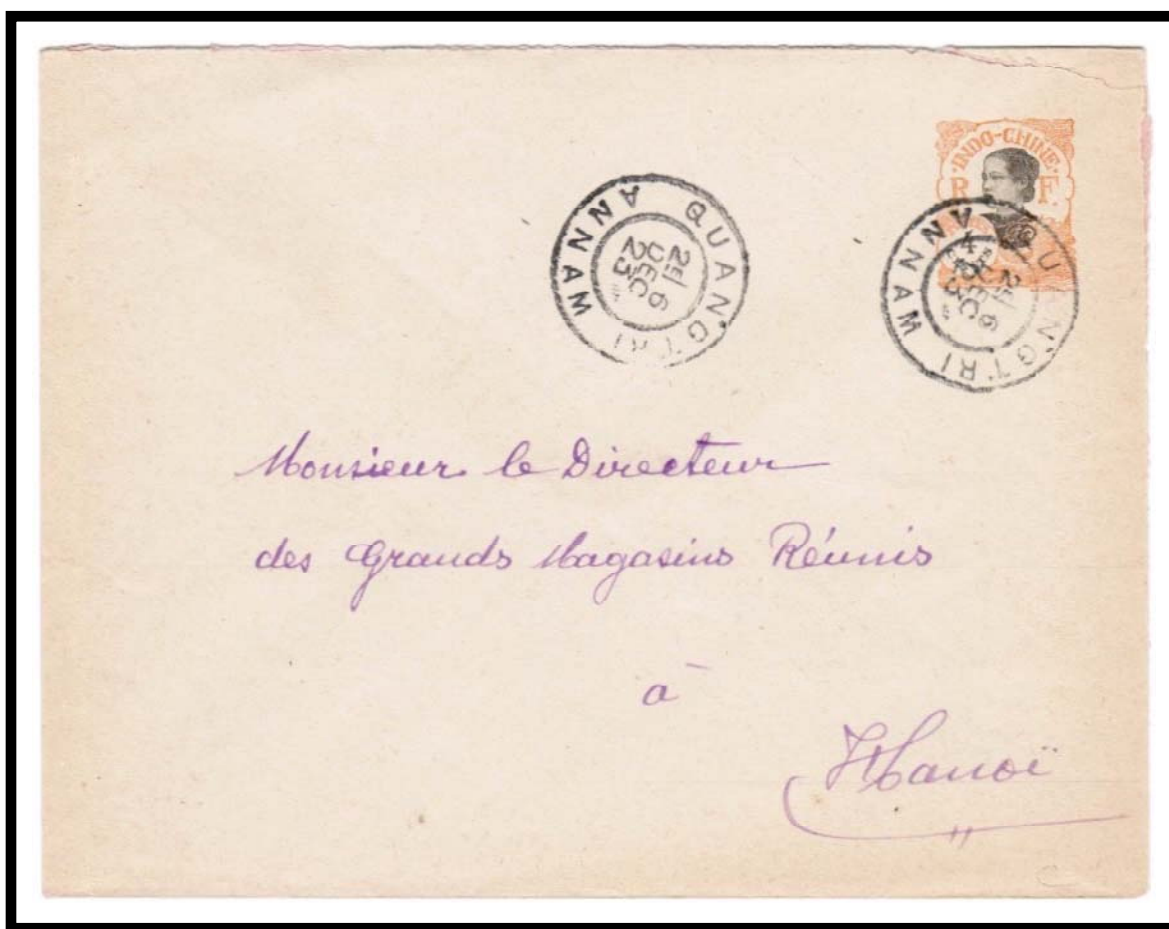
POSTAL MARKINGS
QUANG-TRI ANNAM 23-3 13
REVERSE
HANOI TONKIN 27-3 13

QUANGTRI
ANNAM

Quangtri's type E1 postmark replaced its type E2 postmark in 1915 and remained in service for a decade.



POSTMARK TYPE: E1
PERIOD OF USE: 1915-24



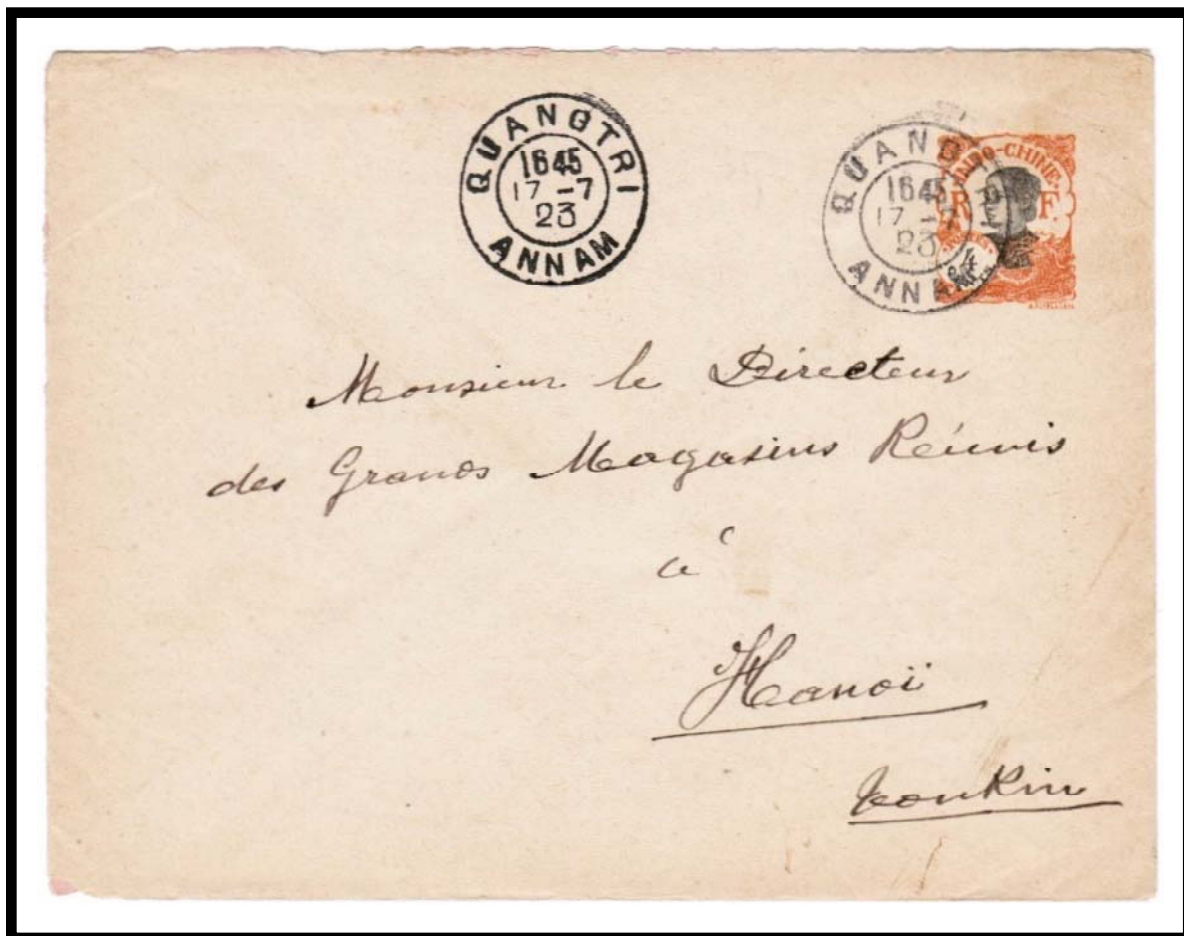
POSTAL MARKINGS
QUANGTRI ANNAM 6 DEC 23
REVERSE
VINH ANNAM 8 DEC 23

QUANGTRI
ANNAM

The type E1(ch) postmark is differentiated from the type E1 postmark by the fact that the month is represented by a number instead of letters.



POSTMARK TYPE: E1(ch)
PERIOD OF USE: 1917-25



POSTAL MARKINGS
QUANGTRI ANNAM 17-7 23
REVERSE
VINH ANNAM 19 JUL 23
HANOI TONKIN 19-7 23

QUANG-TRI
ANNAM

Only the hyphenated spelling of "QUANG-TRI" appeared in a type G format. There never was a type G postmark with the non-hyphenated spelling.



POSTMARK TYPE: G
PERIOD OF USE: 1926-40



POSTAL MARKINGS
QUANG-TRI ANNAM 24-6 36
REVERSE
HANOI R.P. TONKIN 25-6 36
PARIS R.P. AVION 5 • VII 1936

QUANG-TRI
CENTRE VIET-NAM

This mailing shows the only known example of Quang-Tri's type V1 postmark.



POSTMARK TYPE: V1
PERIOD OF USE: 1950



POSTAL MARKINGS
QUANG-TRI CENTRE VIET-NAM 6-11 1950
REVERSE
HUE CENTRE VIET-NAM 9-11 1950

QUINHONE ANNAM

Quinehone was the principal town of Binh Dinh Province. The Quinhone post office kept its type E2 postmark in service for over two decades.



POSTMARK TYPE: E2
PERIOD OF USE: 1900-19



POSTAL MARKINGS
QUINHONE ANNAM 8 JANV 10
SAIGON-CENTRAL COCHINCHINE 11 JANV 10

QUINHONE
ANNAM

Unlike its long-lived counterpart with the month in letters, the postmark version with the month given by a number was in use for only two years.



POSTMARK TYPE: E2(ch)
PERIOD OF USE: 1913-14



POSTAL MARKINGS
QUINHONE ANNAM 10-3 14
REVERSE
BINH-DINH ANNAM 10 MARS 14

QUINHONE
ANNAM

Among the many postmark styles that used the "QUINHONE" spelling, the type E1(ch) was one of the earliest and one of the shortest lived.



POSTMARK TYPE: E1(ch)
PERIOD OF USE: 1917-18



POSTAL MARKINGS
QUINHONE ANNAM -7-8 18

QUINHONE
ANNAM

The G1 device was among the last that employed the "QUINHONE" spelling for the town's name. The first year of use for the type G1 postmark was 1923.



POSTMARK TYPE: G1
PERIOD OF USE: 1923-27



POSTAL MARKINGS
QUINHONE ANNAM 30-9 23
mobile mail box handstamp
REVERSE
HANOI TONKIN 3-10 23

QUINHON
ANNAM

The type G1 postmark with the "QUINHON" spelling, lacking a final "E," was employed through the end of World War II in 1945.



POSTMARK TYPE: G1
PERIOD OF USE: 1931-45



POSTAL MARKINGS
QUINHON ANNAM 31-1 40
airmail label
REVERSE
SAIGON-CENTRAL COCHINCHINE 1 FEVR 40

QUI-NHON
ANNAM

A hyphenated spelling, "QUI-NHON," was yet another version of Quinhone's type G postmarks.



POSTMARK TYPE: G
PERIOD OF USE: 1928-44



POSTAL MARKINGS

QUI-NHON ANNAM 29-6 32
airmail label

REVERSE

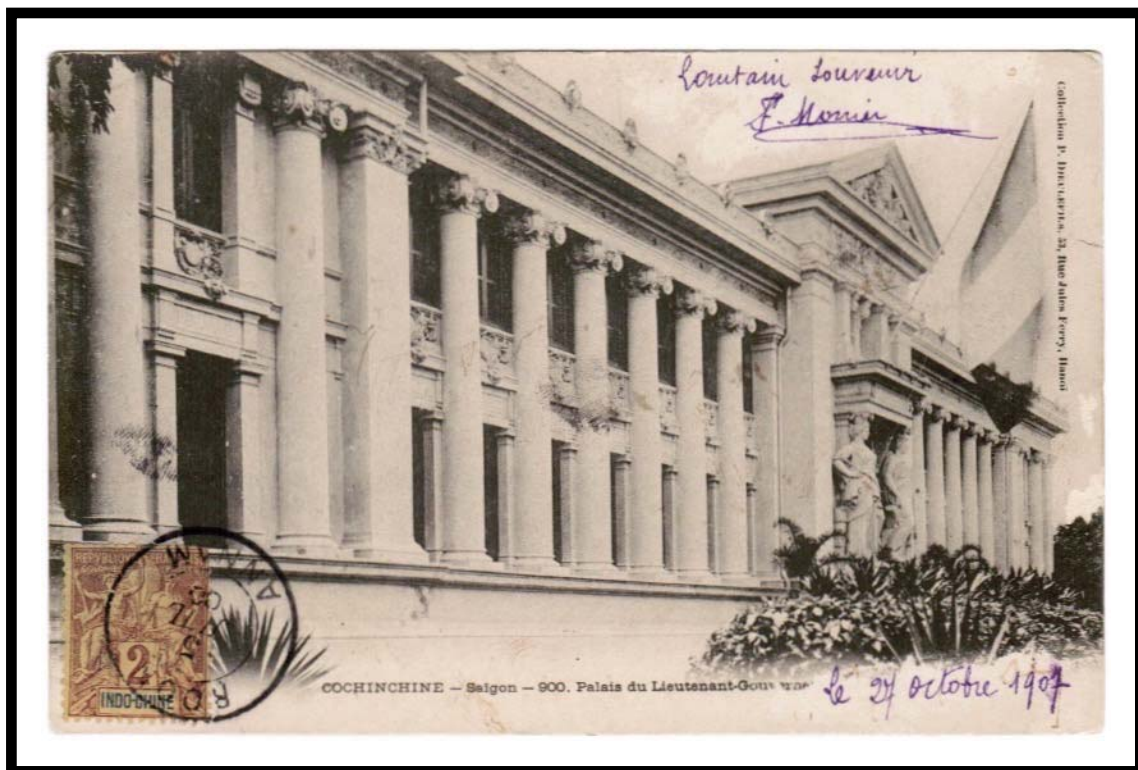
SAIGON-CENTRAL COCHINCHINE 30-6 32
PARIS VIII DISTRIBUTION 11 • VII 1932

ROON ANNAM

The Roon post office opened in 1903 and closed on 2 September 1922 when it was transferred to Kyanh. The type E1 postmark served the post office from the year it opened until 1920.



POSTMARK TYPE: E1
PERIOD OF USE: 1903-20



POSTAL MARKINGS
ROON ANNAM 5 JUL 08

SAM-SON ANNAM

The first postmark for Sam-Son, whose post office opened in 1904, was a type D1 device.



POSTMARK TYPE: D1
PERIOD OF USE: 1906-18



POSTAL MARKINGS

SAM-SON ANNAM 16 AOUT 16
HANOI TONKIN 16-8 16

REVERSE

SAM-SON ANNAM 16 AOUT 16

SAM-SON
ANNAM

The second and final postmark with the hyphenated spelling for Sam-Son was a type G style device. The post office closed in 1946.



POSTMARK TYPE: G
PERIOD OF USE: 1929-45



POSTAL MARKINGS
SAM-SON ANNAM 12-10 39
REVERSE
HANOI R.P. TONKIN 13-10 39

SAMSON
ANNAM

The only postmark that ever used the non-hyphenated "SAMSON" spelling was a type E2 device that was in service during the 1920s.



POSTMARK TYPE: E2
PERIOD OF USE: 1921-27



POSTAL MARKINGS
SAMSON ANNAM 30 JUIL 23
REVERSE
THANH-HOA ANNAM 30-7 23
HANOI TONKIN 31-7 23

SONG-CAU
ANNAM

Song-Cau was one terminus of an important canal that connected with Song Thuong. The first postmark for its post office was a type E2 device.



POSTMARK TYPE: E2
PERIOD OF USE: 1896-1912



POSTAL MARKINGS
SONG-CAU ANNAM 16 MARS 11
REVERSE
QUINHONE ANNAM 17 MARS 11
HANOI TONKIN 22 MARS 11

SONG-CAU
ANNAM

Song-Cau was the principal town for Phuyen Province. Song-Cau's type E2(ch) postmark replaced the type E2 postmark and remained in service for a decade.



POSTMARK TYPE: E2(ch)
PERIOD OF USE: 1913-22



POSTAL MARKINGS
SONG-CAU ANNAM 4-6 14
REVERSE
QUINHONE ANNAM 8-6 14

SONG-CAU
ANNAM

The final postmark with the hyphenated spelling "SONG-CAU" was the type G format.



POSTMARK TYPE: G
PERIOD OF USE: 1923-44



POSTAL MARKINGS

SONG-CAU ANNAM 28-2 35
airmail label

REVERSE

SAIGON-CENTRAL COCHINCHINE 1-3 35
MARSEILLE GARE AVION B^{CHES} DU RHONE 11 • III 1935

SONG CAU
ANNAM

The type G1 postmark with a space in the spelling of "SONG CAU" appeared only during the year 1923. This spelling variety never reappeared.



POSTMARK TYPE: G1
PERIOD OF USE: 1923



POSTAL MARKINGS
SONG CAU ANNAM 9-12 23
REVERSE
QUINHONE ANNAM 9-12 23
HANOI TONKIN 12-12 23